

OLYMPIC COAST NATIONAL MARINE SANCTUARY

AND

AREA TO BE AVOIDED

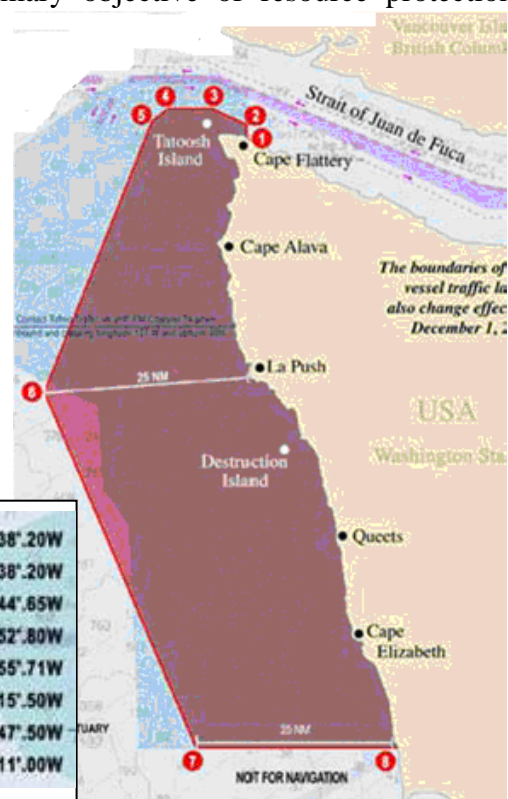
The **Olympic Coast National Marine Sanctuary** was designated in July 1994. The Sanctuary lies along 135 miles of northern Washington coastline and encompasses an area of approximately 2,500 square nautical miles. Sanctuary habitats include beautiful rocky reefs, lush kelp forests, whale migrations corridors, spectacular deep-sea canyons, and underwater archaeological sites. They provide safe habitat for species close to extinction and/or protect historically significant shipwrecks.

The goals of the Olympic Coast National Marine Sanctuary include: (1) enhance resource protection through comprehensive and coordinated conservation and management tailored to specific resources, in a manner that complements existing regulatory authorities; (2) support, promote, and coordinate scientific research on, and monitoring of, Sanctuary resources to improve management and decision-making in the Sanctuary; (3) enhance public awareness, understanding, and wise use of the marine environment; and (4) facilitate to the extent compatible with the primary objective of resource protection, multiple uses of the Sanctuary not prohibited pursuant to other authorities.

Incorporating much of the Olympic Coast National Marine Sanctuary, an **Area to be Avoided (ATBA)** was designated by the International Maritime Organization (IMO) first in 1995 and then expanded in 2002. Effective December 1, 2002, this ATBA applies to all ships and barges carrying cargoes of oil or hazardous materials, and all ships 1,600 gross tons and above solely in transit. These vessels should avoid the area bound by a line connecting the following coordinates:

This ATBA was established to reduce the risk of a marine casualty and resulting pollution and environmental damage with the Olympic Coast National Marine Sanctuary.

1	48°13'.30N	124°38'.20W
2	48°14'.17N	124°38'.20W
3	48°16'.15N	124°44'.85W
4	48°16'.15N	124°52'.80W
5	48°14'.67N	124°55'.71W
6	47°11'.70N	125°15'.50W
7	47°07'.70N	124°47'.50W
8	47°07'.70N	124°11'.00W



For more details see: <http://olympiccoast.noaa.gov/protection/atba/atbamap.html>.